

HEALTH + MEDICAL RESEARCH



REGU/REGIS Newsletter | Issue 17 | 30 August 2022

In this issue

- 2022 HREC Chairs Meeting *venue update
- HREC Executive Officers - CT Scientific Review Policy
- Metrics Queries
- REGIS Dashboard Lunch & Learn Feedback
- New Videos and Playlists
- Upcoming Events and Dates
- Previous Versions of REGU/REGIS Newsletter

2022 HREC Chairs Meeting

Audience: HREC Chairs/ HREC Deputy Chairs or Chairs of a HREC Sub Committee/ Executive Officers



New Venue

Cliftons Sydney Margaret St

We are excited to announce that the annual HREC Chairs Meeting will be held on 23 September 2022.

An invitation has been sent out to all HREC Chairs, HREC Deputy Chairs or Chairs of a HREC Sub Committee and Executive Officers. This networking event presents a great opportunity for attendees to meet other members from other Jurisdictions and exchange ideas and discuss topics of relevance.

Should you have any specific topic you would like to see on the agenda, please put your ideas down when you complete the registration form.

Date and Time : 23 Sept 2022, 12:00PM to 4:00PM

Location : [Cliftons Sydney, 13/60 Margaret St, Sydney NSW 2000](#)

HREC Executive Officers - CT Scientific Review Policy

Share your HREC's experience with PD2007-035 by 15 Sep 2022 in this short 5Q survey

Audience: HREC Chairs/ HREC Deputy Chairs or Chairs of a HREC Sub Committee/ Executive Officers



We would like to invite you to complete the 5 question survey "NSW HREC's experience with PD2007-035: Standards for Scientific Review of Clinical Trials": <https://forms.office.com/r/7uwsr5f4uZ>.

Our office was initiating the review of NSW Health Policy Directive 2007-035: Human Research Ethics Committees: Standards for Scientific Review of Clinical Trials.

We would like to get your experience with PD2007-035, and your opinion on the value of updating its content.

Only one response is expected from each HREC. We hope you could liaise with your Chair to get a consolidated opinion and encourage you to consult your members at a HREC meeting.

We hope to receive your response by Thursday, 15 Sep 2022.

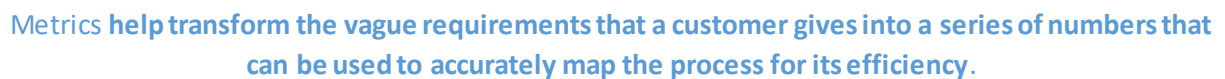
Thank you for those who have already submitted the response! Your insights are greatly appreciated.

Metrics Queries

Audience: Research Office/Researcher

The metrics manual is available for research offices and should provide clarity on the majority of queries raised.

Jackie from the Research Ethics and Governance Unit (REGU) has also included a flow diagram and some written scenarios to help those of us that prefer images over words.



Common areas for checking

Meeting Submission Closing Dates: The submission closing date of HREC meetings in REGIS must match the meeting closing dated advertised on the OHMR website. This includes any formal pre meetings e.g. Clinical Trial Sub Committees

Classification Ethics Review pathway: Currently Greater than low risk applications are captured by metrics. This classification must be correct at the time of approving/authorising an application.

REGIS Dashboard Lunch & Learn Feedback

Audience: Research Office

If you attended the Lunch & Learn: Dashboard session held on Friday 26th August conducted by the NSW eHealth REGIS team, we would love to hear from you!

We want your feedback! Please complete this short survey that will assist us with structuring future Lunch & Learn webinars



1 - REGIS Dashboard Lunch & Learn Feedback

Embed://<iframe width="640px" height="480px"
src="https://forms.office.com/Pages/ResponsePage.aspx?id=v6eHptsC3008u-eovaYRolfjN10xmetMrRPfw4LXmoVUME1QSks3V05QR0EzMkVBV1hPOVFONUhGSi4u&embed=true"
frameborder="0" marginwidth="0" marginheight="0" style="border: none; max-width:100%; max-height:100vh" allowfullscreen webkitallowfullscreen mozallowfullscreen msallowfullscreen></iframe>

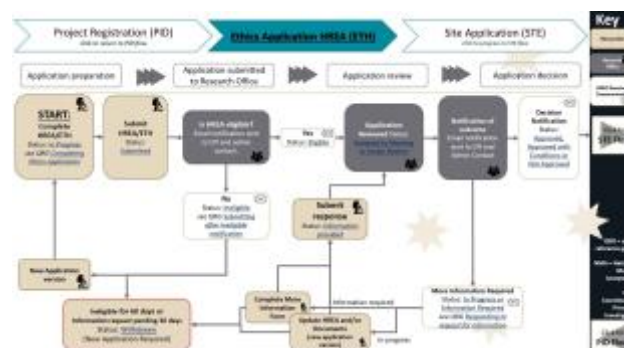
New Videos and Playlists

Audience: Research Office/Researcher

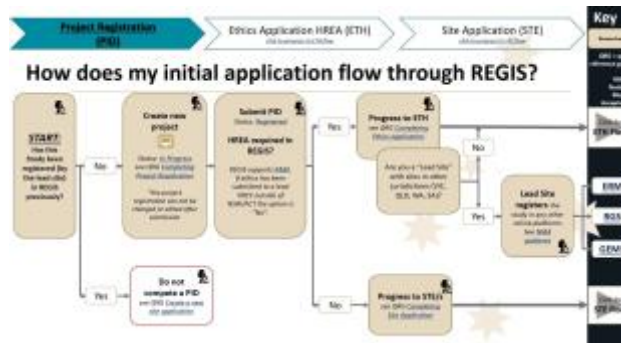
REGIS Playlists

A playlist is a **collection of videos** based on a theme.

Playlist 1: Researcher - How to create your human research project in REGIS



3 - ethics application flow



4 - site application flow

Upcoming events and dates

Audience: Research Office/Researcher



12 September - REGIS Researcher Training: [Registrations open](#) for 12 September and 10 October Researcher training cycles. [Click here](#) for training schedule.

23 September *venue updated - HREC Chairs meeting [Cliftons Sydney, 13/60 Margaret St, Sydney NSW 2000](#) 12:00PM to 4:00PM

28 September - REGIS Research Office Training: [Registrations open](#) for 28 September Research Office training cycles. [Click here](#) for training schedule.

November 2022 - Joint REGU & Clinical Trials NSW Meeting *venue to be confirmed *date to be confirmed

Previous Versions of REGU/REGIS Newsletter

Audience: Research Office/Researcher

All previous version of the fortnightly email are available from the REGIS website: <https://regis.health.nsw.gov.au/news-and-events/regis-office-webinars/>