

HEALTH+MEDICAL RESEARCH



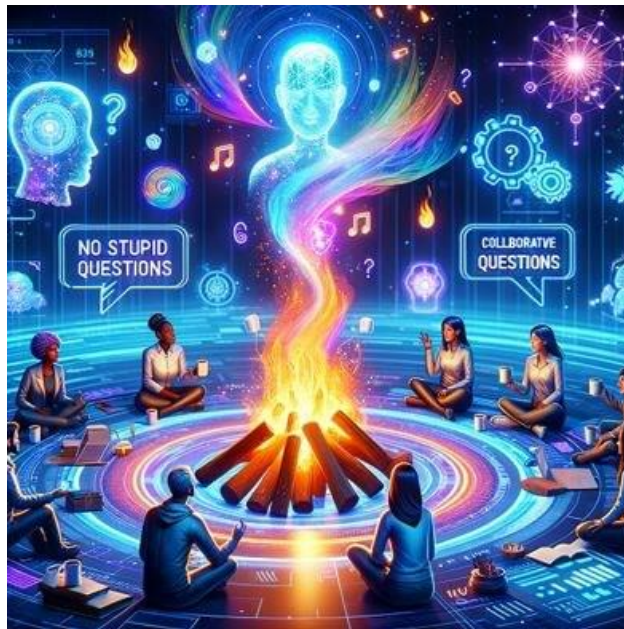
REGU/REGIS Newsletter | Issue 19 | 31 October 2023

In this issue

- REGU Forum Project Update
- REGIS Product Change: Draft Release Notes
- OmniStar Server Migration: 25 November 2023
- Research Office Contribution - Royal Rehab
- Researcher/Coordinator Contributions
- Previous Versions of REGU/REGIS Newsletter

REGU Forum Project Update

Audience: Research Office/Researchers



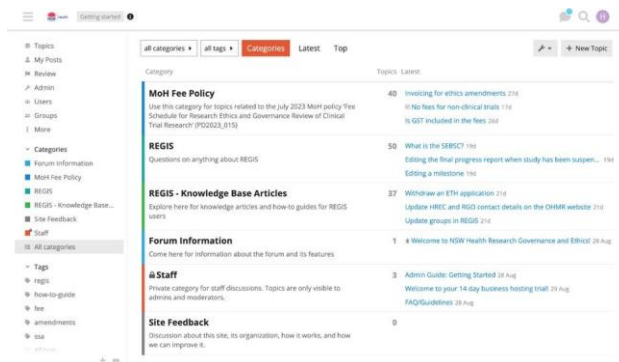
The NSW Research Ethics and Governance Collaborative Forum is not just taking baby steps; it's practically sprinting into existence! Picture this: a digital campfire where the brightest minds from various LHD research offices can gather 'round to swap stories, ask those "there are no stupid questions" questions, and sip the metaphorical marshmallow-laden cocoa of collaborative knowledge.

In our quest to weave the social fabric of this forum, we've consulted with a kaleidoscope of research offices, gathering hues of insights to paint our platform's cornerstone. With a tip of the hat to Discourse, our chosen platform, we've crafted the skeleton of the forum with more than a few clicks and a bucketful of enthusiasm.

Now, it's showtime! The forum's basic structure is now in place, and we're inviting a handful of research office personnel and Ministry of Health staff to help us pilot this digital vessel. Your feedback will be the compass that guides us toward success.

If your curiosity is piqued and you're itching to be part of this pioneering phase, it's time to step forward. Contact [Hogan](#) or [Yagiz](#) to become one of the trailblazers as a pilot user.

We're not just launching a forum; we're fostering a community where every question, big or small, can lead to great leaps in our collaborative journey. Don't just watch from the sidelines—dive in and be a part of crafting a space that's as innovative and dynamic as the minds it will host. We're excited to see where this journey will take us together.



Do you want live notifications when people reply to your posts? [Enable Notifications](#)

No fees for non-clinical trials

hogan.wang 27d

This topic is pre-filled from previous email communication

I've heard that there are no fees for non-clinical trials. Could you direct me to the section in the policy directive that addresses this?

Solved by EthicsMaster in post #3

[Screenshot 2023-10-13 10:02:00] Here is the section from the PDI

Created 27d 19d 2 replies 14 views 2 users 19

hogan.wang 27d

You can refer to page 2, section 2 of the Policy Directive for details on the exemption of non-clinical trials from fees.

8 days later

2. RESEARCH ETHICS AND GOVERNANCE FEES FOR CLINICAL TRIAL RESEARCH

Research ethics and governance fees are charged for the review of clinical trial research applications and amendments. Research ethics and governance fees vary depending on the type of submission and the project sponsor.

No fee is to be raised for research applications that are not for clinical trial research.

This Policy Directive requires the application of a uniform fee structure for ethics and governance review of research across NSW Health Organisations. These fees apply to both single site and multi-centre research studies. These fees are payable to the NSW Health Organisations on submission of an ethics and governance application or amendment.

NSW Health Organisations must not charge review fees for items not contained in the fee schedule.

Here is the section from the PDI

Solution

Share Bookmark Flag Assign Reply

Tracking You will see a count of new replies because you posted a reply to this topic.

New & Unread Topics

| Topic | Replies | Views | Activity |
|--|---------|-------|----------|
| GST treatment in new fee policy | 1 | 1 | 28d |
| Amendment fees for prospectively authorised trials | 1 | 1 | 28d |
| Amendment fee application date | 1 | 2 | 27d |
| Determination of amendment categorisation | 1 | 1 | 27d |
| Previously approved study amendment charges | 1 | 2 | 28d |

Want to read more? [Browse other topics in Matt Fee Policy](#) or [view latest topics](#).

REGIS Product Change: Draft Release Notes

Audience: Research Office/Researchers



As mentioned in issue 18, minor and subtle change is coming to REGIS this November!

In order to prepare for these changes, release notes are being finalised with the [draft version available via this link](#). This will provide you with the description of the change, who it affects and what to expect.

As the majority of changes affect the research office, a Q&A will be held the week of the release with the invitation to be sent closer to the release date.

OmniStar Server Migration: 25 November 2023

Audience: Research Office/Researchers



F1 Solutions will be completing an upgrade to enhance the performance, security and functionality of the OmniStar (REGIS) infrastructure. Specifically, they will be migrating OmniStar to a new SQL Server version.

This migration is planned for **Saturday 25 November 2023 from 7:00am - 11:00pm** and **REGIS will be unavailable during this period.**

This has been scheduled to occur over a weekend to minimize any potential impact on your experience. F1 Solutions have a dedicated team that has already set up the new server infrastructure to ensure a smooth transition.

Date of OmniStar Server Migration: Saturday 25th of November 2023

REGIS unavailable between: 7:00am – 11:00pm AEDT

Research Office Contribution



Royal Rehab - Who we are

Royal Rehab is an Affiliated Health Organisation (AHO) that provides public rehabilitation services in NSW. These services are based at the Ryde campus and include an inpatient Spinal Injury Unit, the Spinal Outreach Service that services all of NSW, a Brain Injury Rehabilitation Unit, a Brain Injury Community Rehabilitation Service and a general Community Rehabilitation Service. We are located in Northern Sydney LHD.

The AHO is a part of the Royal Rehab Group, which also includes two private rehabilitation hospitals (one in Ryde and another in Petersham), as well as community allied health services and an extensive range of disability support services across New South Wales, Queensland, and Victoria.

Research and research governance are not new to Royal Rehab, but becoming a named site in REGIS for site applications in late January 2023 has livened up this space for us. We depend on our HREC colleagues in NSW LHDs to approve projects and our site assessments are tailored to the specific characteristics of our patient populations and services.

The Research Office for the Royal Rehab Group comprises Julie Pryor who is the Director of Research and Marissa Mancuso, our recently appointed Research Governance Officer. We are a small but mighty team, that is currently reviewing all existing processes and practices with a primary focus of fostering the design and conduct of research that is meaningful to our service users and providers.

Recent REGU/REGIS Roundtables have been invaluable in supporting us on this journey. Peers from across various LHDs have been extremely welcoming and generous in their camaraderie and support, for which we are extremely grateful.



adjustment
robotics sexuality pain
exoskeleton therapy
catheters gaming
bowels
communication
recreation gardening

1 - Here's a flavour of the research studies coming across our desks

Our catastrophic injury populations may be small in number, but they are in high demand by researchers. This means that there are multiple studies underway in any one clinical service all wanting to recruit from the same small populations. A key part of our work going forward is bringing operational and research staff together so everyone's interests and priorities can be considered, and fruitful collaborations can be fostered for the benefit of all.

You can contact us on research.governance@royalrehab.com.au

Julie Pryor

Director of Research

Julie.pryor@royalrehab.com.au

Want to know more about Affiliated Health Organisations (AHOs)? [Click this link!](#)

*Up next is **JHFMHN!** We look forward to your contribution for **Issue 20 - 14 November 2023***

Researcher/Coordinator Contributions

Are you part of a research team that has created some great resources or worked through an issue or teamed up with your Research Office to streamline a process? We know this newsletter is going out far and wide AND we also know YOUR colleagues would love to hear what you've been doing. Feel free to send in a short blurb about what you're up to and we'll sing your success from the rooftops!

Upcoming events and dates

Audience: Research Office/Researcher



2023 Events and Dates

Previous Versions of REGU/REGIS Newsletter

Audience: Research Office/Researcher

All previous version of the fortnightly email are available from the REGIS website: <https://regis.health.nsw.gov.au/news-and-events/regis-office-webinars/>

REGU/REGIS Newsletter: Inspiring other units within OHMR and LHDs since February 2021